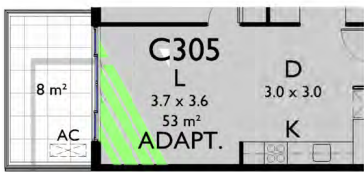




11am
SHADED AREA = 1.3m²



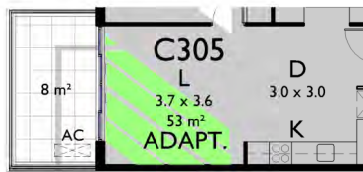
1130am
SHADED AREA = 2.3m²



12pm
SHADED AREA = 3.3m²



1230pm
SHADED AREA = 4.5m²



1pm
SHADED AREA = 5.9m²



130pm
SHADED AREA = 7.5m²



2pm
SHADED AREA = 9.3m²



230pm
SHADED AREA = 11.9m²



3pm
SHADED AREA = 13.6m²

SOLAR ACCESS PLANS WINTER SOLSTICE

Y	19.03.18	ADDITIONAL INFORMATION FOR APPROVAL	SJ	ADM
X	09.02.18		djm	ADM
ISSUE	DATE	DESCRIPTION	initials	chkd
sign			date	
These drawings are not to be scaled. Figured dimensions shall be used in all cases.				

COPYRIGHT - These drawings remain the exclusive copyright of ADM Architects. Reproductions in any form whether electronic, digital or otherwise shall not be allowed except by express permission granted in writing by ADM Architects.

FIGURED DIMENSIONS - These drawings are not to be scaled. Figured dimensions shall be used in all cases.

DISCREPANCIES IN DIMENSIONS/POSITIONS/LOCATIONS/FINISHES The Contractor is to verify any dimensional, location or finish discrepancy with ADM Architects prior to any physical construction or setting out so that ADM Architects is given the opportunity to resolve potential discrepancies or conflicts in sufficient time without causing abortive work. The Contractor shall be responsible for notifying ADM Architects of any such discrepancy or conflict that may arise on site.

COORDINATION OF WORKS - These drawings are to be read in conjunction with the full set of consultant's drawings, specifications, reports and DA conditions.

NOMINATED ARCHITECT - The nominated Architect for ADM Projects (Australia) Pty Ltd T/A ADM Architects is Angelo Di Martino ARB No.7608



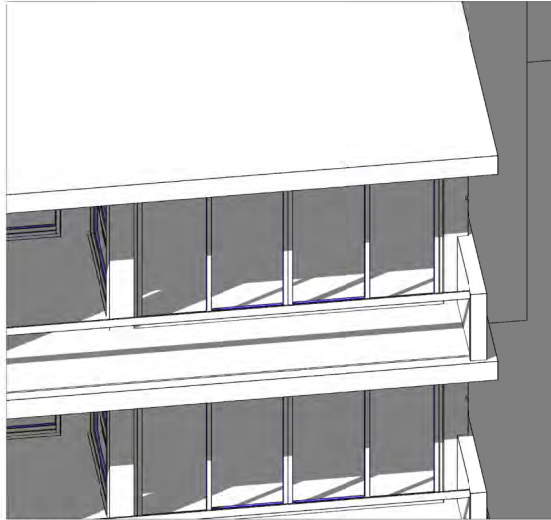
NICOLAS
DAOUD &
CO PTY. Ltd

Project
DEMOLITION OF EXISTING STRUCTURES AND CONSTRUCTION
OF A MIXED USE DEVELOPMENT COMPRISING RESIDENTIAL
APARTMENTS ABOVE RETAIL SHOPS, COMMERCIAL TENANCIES
AND ASSOCIATED CARPARKING AREAS

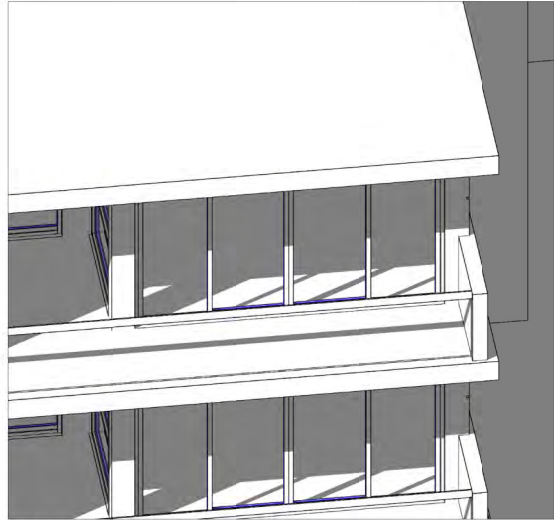
at
LOT 1, DP50193, LOT 3, DPI 104857, PT.1, DP506764, LOTS 100 & 200,
DPI017091,
AKUNA & TERRALONG STREET
KIAMA

scale	NTS
date	MARCH 2018
drawn	djm SJ chkd ADM
drawing	DEVELOPMENT APPLICATION
Project No.	SOLAR ACCESS - C305
2016-19(a)	Project No. Drawing No. issue
A-427c	Y

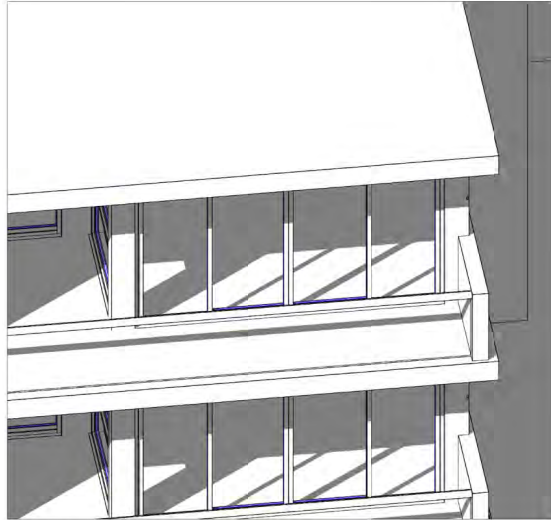
NOT FOR CONSTRUCTION



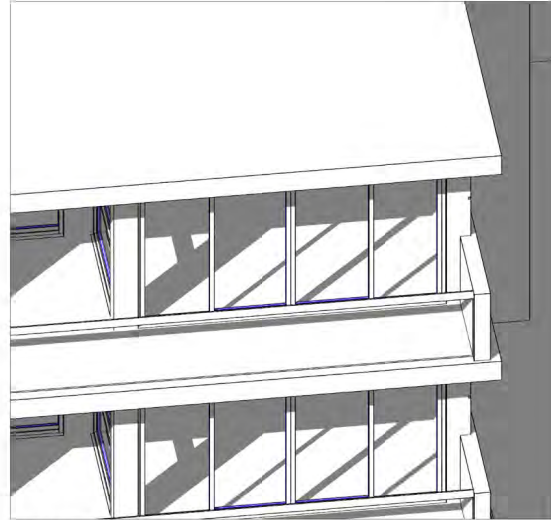
11:25am



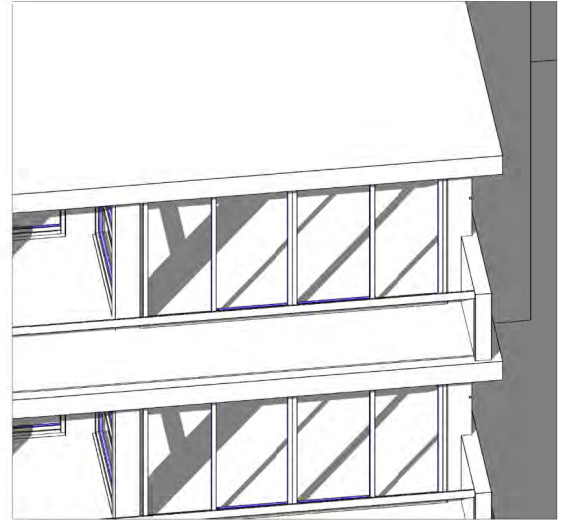
11:30am



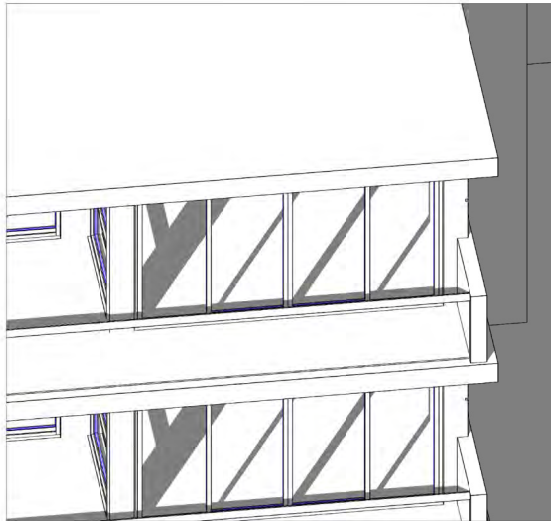
12pm



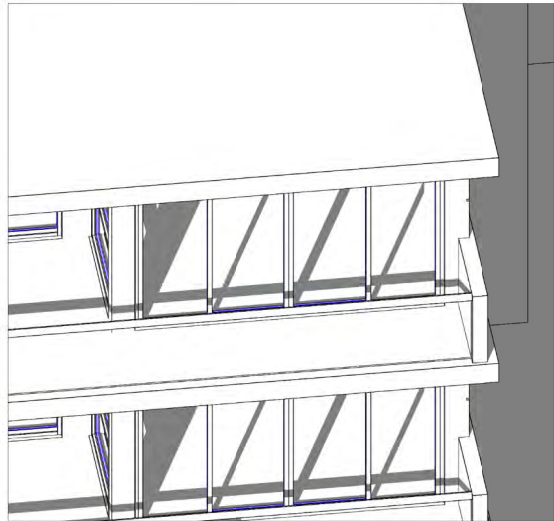
12:30pm



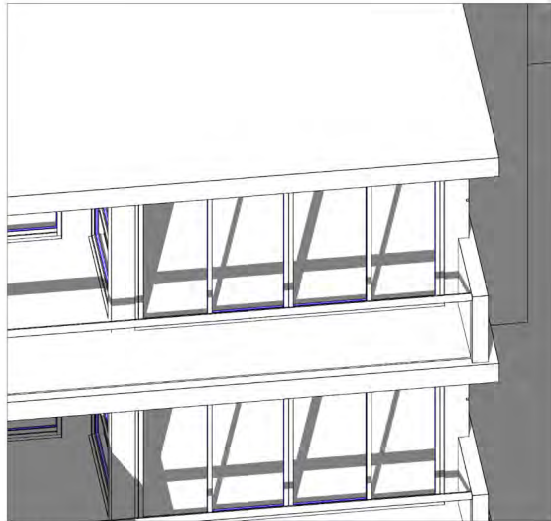
1pm



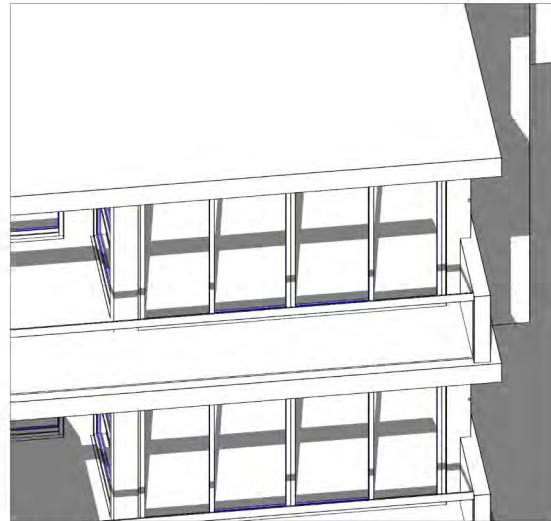
1:30pm



2pm



2:30pm



3pm

SOLAR ACCESS DIAGRAM WINTER SOLSTICE

Y	19.03.18	ADDITIONAL INFORMATION	SJ	ADM
X	09.02.18	FOR APPROVAL	djm	ADM
ISSUE	DATE	DESCRIPTION	initials	chkd
sign			date	
These drawings are not to be scaled. Figured dimensions shall be used in all cases.				

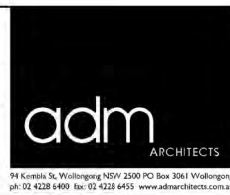
COPYRIGHT - These drawings remain the exclusive copyright of ADM Architects. Reproductions in any form whether electronic, digital or otherwise shall not be allowed except by express permission granted in writing by ADM Architects.

FIGURED DIMENSIONS - These drawings are not to be scaled. Figured dimensions shall be used in all cases.

DISCREPANCIES IN DIMENSIONS/POSITIONS/LOCATIONS/FINISHES The Contractor is to verify any dimensional, location or finish discrepancy with ADM Architects prior to any physical construction or setting out so that ADM Architects is given the opportunity to resolve potential discrepancies or conflicts in sufficient time without causing abortive work. The Contractor shall be responsible for notifying ADM Architects of any such discrepancy or conflict that may arise on site.

COORDINATION OF WORKS - These drawings are to be read in conjunction with the full set of consultant's drawings, specifications, reports and DA conditions.

NOMINATED ARCHITECT- The nominated Architects for ADM Projects (Australia) Pty Ltd T/A ADM Architects is Angelo Di Martino AIB No.7608

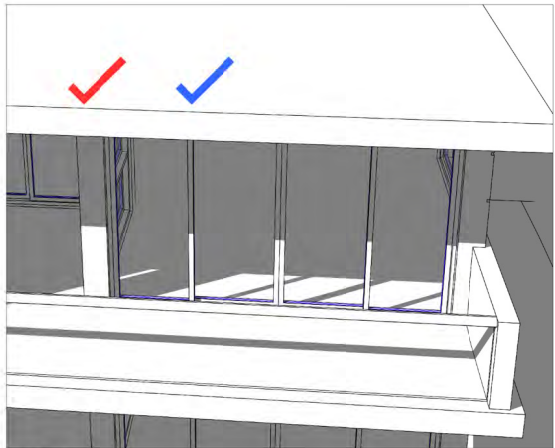


**NICOLAS
DAOUD &
CO PTY. Ltd**

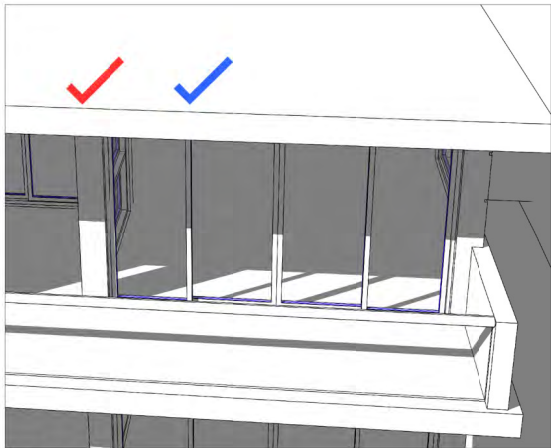
Project
DEMOLITION OF EXISTING STRUCTURES AND CONSTRUCTION
OF A MIXED USE DEVELOPMENT COMPRISING RESIDENTIAL
APARTMENTS ABOVE RETAIL SHOPS, COMMERCIAL TENANCIES
AND ASSOCIATED CARPARKING AREAS
at
LOT 1, DP50193, LOT 3, DPI I04857, PT.1, DP506764, LOTS 100 & 200,
DPI017091,
AKUNA & TERRALONG STREET
KIAMA

scale	NTS
date	MARCH 2018
drawn	djm SJ chkd ADM
drawing	DEVELOPMENT APPLICATION
Project No.	SOLAR ACCESS - C402
2016-19(a)	Project No. Drawing No. issue
	A-428a Y

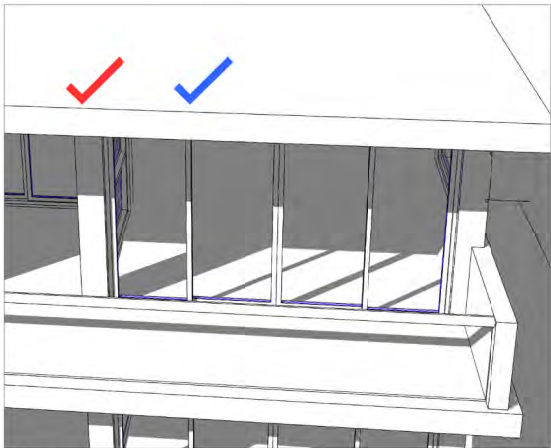
NOT FOR CONSTRUCTION



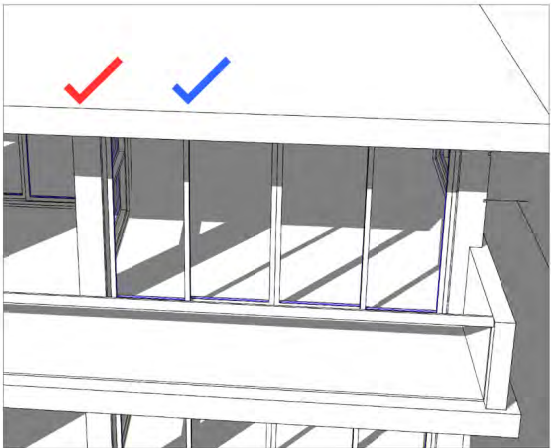
11 25am



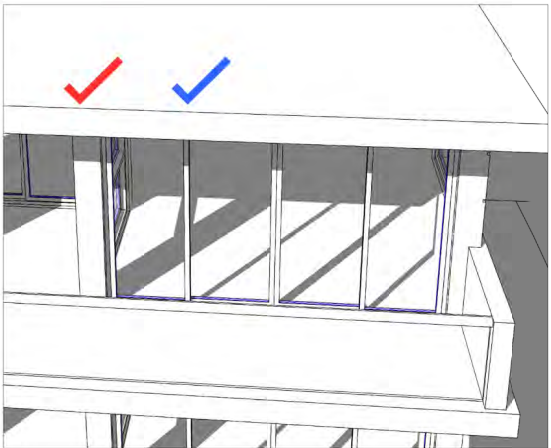
11 30pm



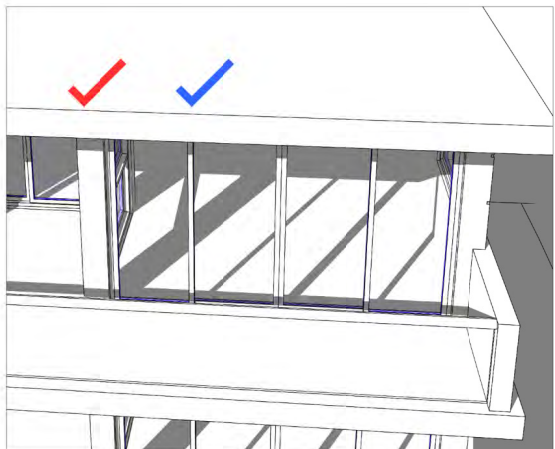
12pm



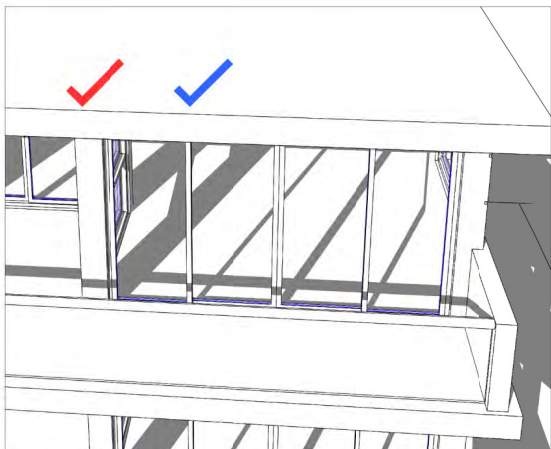
12 30pm



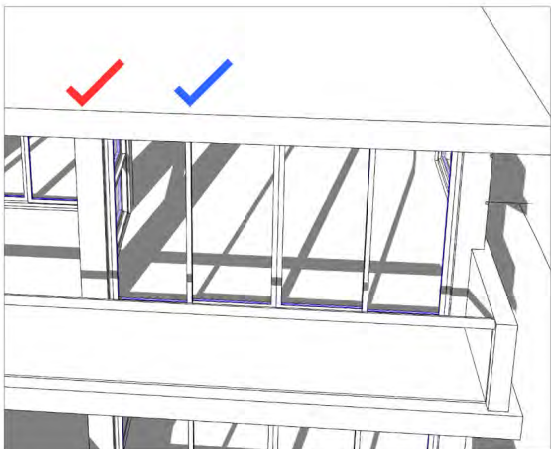
1pm



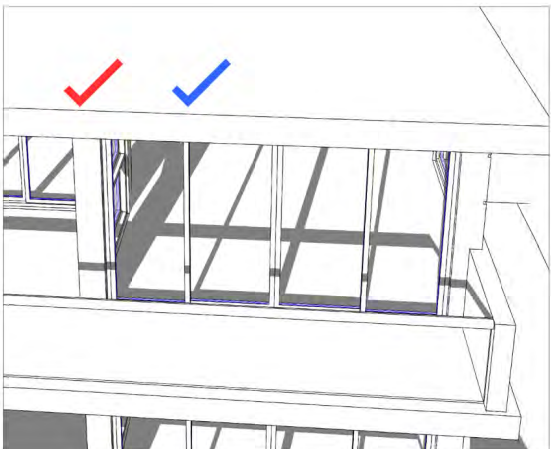
1 30pm



2pm



2 30pm



3pm

SOLAR ACCESS WINTER SOLSTICE



BALCONY 3hrs 35mins



LIVING 3hrs 35mins

Y	19.03.18	ADDITIONAL INFORMATION FOR APPROVAL	SJ	ADM
X	09.02.18		djm	ADM
ISSUE	DATE	DESCRIPTION	initials	chkd
sign			date	
These drawings are not to be scaled. Figured dimensions shall be used in all cases.				

COPYRIGHT - These drawings remain the exclusive copyright of ADM Architects. Reproductions in any form whether electronic, digital or otherwise shall not be allowed except by express permission granted in writing by ADM Architects.

FIGURED DIMENSIONS - These drawings are not to be scaled. Figured dimensions shall be used in all cases.

DISCREPANCIES IN DIMENSIONS/POSITIONS/LOCATIONS/FINISHES The Contractor is to verify any dimensional, location or finish discrepancy with ADM Architects prior to any physical construction or setting out so that ADM Architects is given the opportunity to resolve potential discrepancies or conflicts in sufficient time without causing abortive work. The Contractor shall be responsible for notifying ADM Architects of any such discrepancy or conflict that may arise on site.

COORDINATION OF WORKS - These drawings are to be read in conjunction with the full set of consultant's drawings, specifications, reports and DA conditions.

NOMINATED ARCHITECT- The nominated Architect for ADM Projects (Australia) Pty Ltd T/A ADM Architects is Angelo Di Martino A/B No.7608

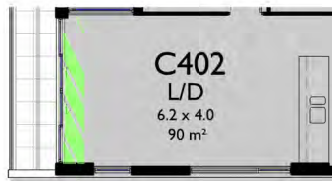


NICOLAS
DAOUD &
CO PTY. Ltd

Project
DEMOLITION OF EXISTING STRUCTURES AND CONSTRUCTION
OF A MIXED USE DEVELOPMENT COMPRISING RESIDENTIAL
APARTMENTS ABOVE RETAIL SHOPS, COMMERCIAL TENANCIES
AND ASSOCIATED CARPARKING AREAS
at
LOT 1, DP50193, LOT 3, DP1104857, PT.1, DP506764, LOTS 100 & 200,
DP1017091,
AKUNA & TERRALONG STREET
KIAMA

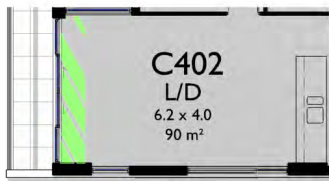
scale	NTS
date	MARCH 2018
drawn	djm SJ chkd ADM
drawing	DEVELOPMENT APPLICATION
Project No.	SOLAR ACCESS - C402
2016-19(a)	Drawng No. A-428b
issue	Y

NOT FOR CONSTRUCTION



1125am

SHADED AREA = 1.4m²



1130am

SHADED AREA = 1.6m²



12pm

SHADED AREA = 3.1m²



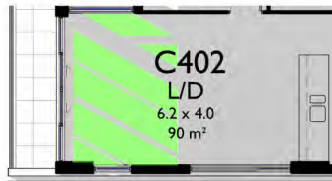
1230pm

SHADED AREA = 4.7m²



1pm

SHADED AREA = 6.6m²



130pm

SHADED AREA = 8.1m²



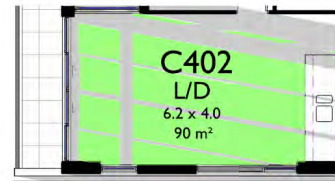
2pm

SHADED AREA = 10.4m²



230pm

SHADED AREA = 13.7m²



3pm

SHADED AREA = 17.0m²

SOLAR ACCESS PLANS WINTER SOLSTICE

Y	19.03.18	ADDITIONAL INFORMATION FOR APPROVAL	SJ	ADM
X	09.02.18		djm	ADM
ISSUE	DATE	DESCRIPTION	initials	chkd
sign			date	
These drawings are not to be scaled. Figured dimensions shall be used in all cases.				

COPYRIGHT - These drawings remain the exclusive copyright of ADM Architects. Reproductions in any form whether electronic, digital or otherwise shall not be allowed except by express permission granted in writing by ADM Architects.

FIGURED DIMENSIONS - These drawings are not to be scaled. Figured dimensions shall be used in all cases.

DISCREPANCIES IN DIMENSIONS/POSITIONS/LOCATIONS/FINISHES The Contractor is to verify any dimensional, location or finish discrepancy with ADM Architects prior to any physical construction or setting out so that ADM Architects is given the opportunity to resolve potential discrepancies or conflicts in sufficient time without causing abortive work. The Contractor shall be responsible for notifying ADM Architects of any such discrepancy or conflict that may arise on site.

COORDINATION OF WORKS - These drawings are to be read in conjunction with the full set of consultant's drawings, specifications, reports and DA conditions.

NOMINATED ARCHITECT - The nominated Architect for ADM Projects (Australia) Pty Ltd T/A ADM Architects is Angelo Di Martino AIB No.7608

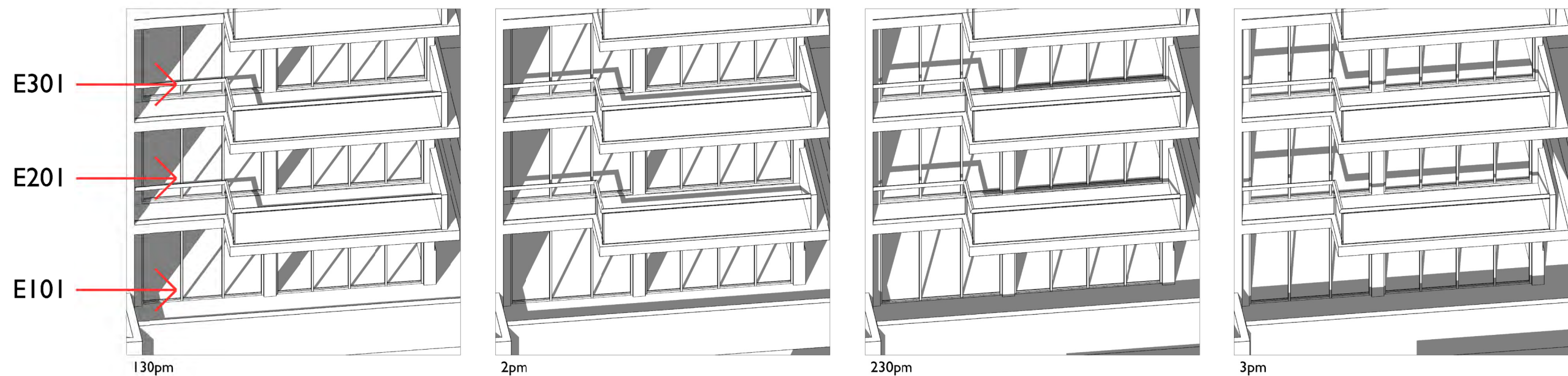
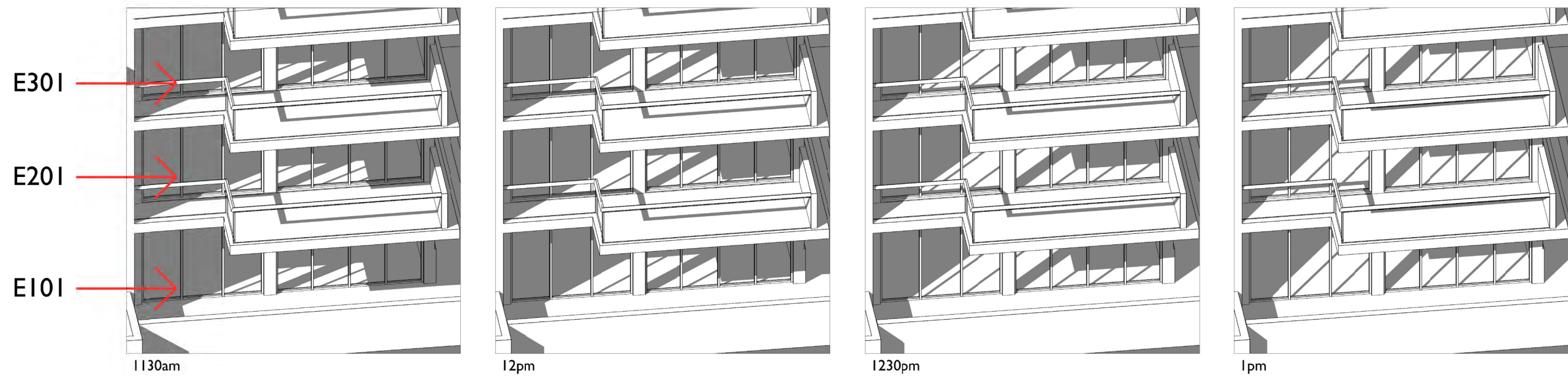


NICOLAS
DAOUD &
CO PTY. Ltd

Project
DEMOLITION OF EXISTING STRUCTURES AND CONSTRUCTION
OF A MIXED USE DEVELOPMENT COMPRISING RESIDENTIAL
APARTMENTS ABOVE RETAIL SHOPS, COMMERCIAL TENANCIES
AND ASSOCIATED CARPARKING AREAS

at
LOT 1, DP50193, LOT 3, DP1104857, PT.1, DP506764, LOTS 100 & 200,
DP1017091,
AKUNA & TERRALONG STREET
KIAMA

scale	NTS
date	MARCH 2018
drawn	djm SJ chkd ADM
drawing	DEVELOPMENT APPLICATION
Project No.	SOLAR ACCESS - C402
2016-19(a)	Project No.
A-428c	Drawing No.
Y	issue



SOLAR ACCESS DIAGRAM - E101, E201 & E301 WINTER SOLSTICE

Y	19.03.18	ADDITIONAL INFORMATION FOR APPROVAL	SJ	ADM
X	09.02.18		djm	ADM
ISSUE	DATE	DESCRIPTION	initials	chkd
sign		date		
□ These drawings are not to be scaled. Figured dimensions shall be used in all cases.				

COPYRIGHT - These drawings remain the exclusive copyright of ADM Architects. Reproductions in any form whether electronic, digital or otherwise shall not be allowed except by express permission granted in writing by ADM Architects.

FIGURED DIMENSIONS - These drawings are not to be scaled. Figured dimensions shall be used in all cases.

DISCREPANCIES IN DIMENSIONS/POSITIONS/LOCATIONS/FINISHES The Contractor is to verify any dimensional, location or finish discrepancy with ADM Architects prior to any physical construction or setting out so that ADM Architects is given the opportunity to resolve potential discrepancies or conflicts in sufficient time without causing abortive work. The Contractor shall be responsible for notifying ADM Architects of any such discrepancy or conflict that may arise on site.

COORDINATION OF WORKS - These drawings are to be read in conjunction with the full set of consultant's drawings, specifications, reports and DA conditions.

NOMINATED ARCHITECT - The nominated Architect for ADM Projects (Australia) Pty Ltd T/A ADM Architects is Angelo Di Martino AIB No.7608

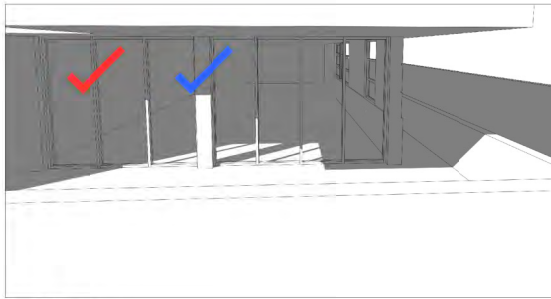


**NICOLAS
DAOUD &
CO PTY. Ltd**

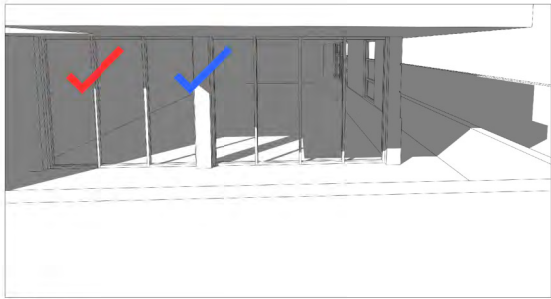
Project
DEMOLITION OF EXISTING STRUCTURES AND CONSTRUCTION
OF A MIXED USE DEVELOPMENT COMPRISING RESIDENTIAL
APARTMENTS ABOVE RETAIL SHOPS, COMMERCIAL TENANCIES
AND ASSOCIATED CARPARKING AREAS
at
LOT 1, DP50193, LOT 3, DPI104857, PT.1, DP506764, LOTS 100 & 200,
DPI017091,
AKUNA & TERRALONG STREET
KIAMA

scale	NTS
date	MARCH 2018
drawn	djm SJ chkd ADM
drawing	DEVELOPMENT APPLICATION
Project No.	SOLAR ACCESS DIAGRAM - E101, E201 & E301
2016-19(a)	Project No. Drawing No. issue
A-429a	Y

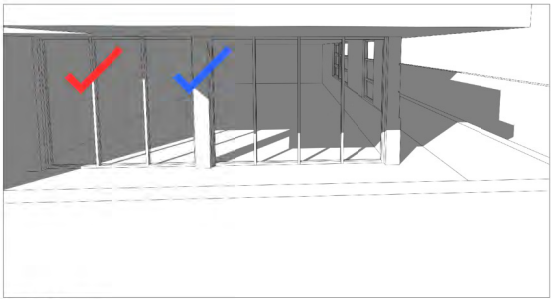
NOT FOR CONSTRUCTION



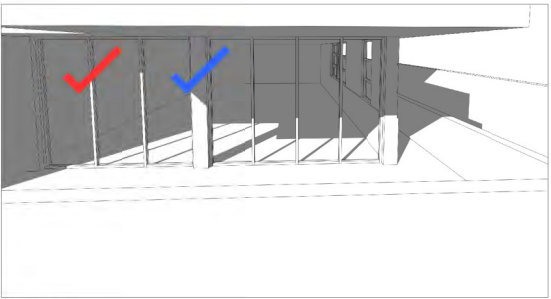
1130am



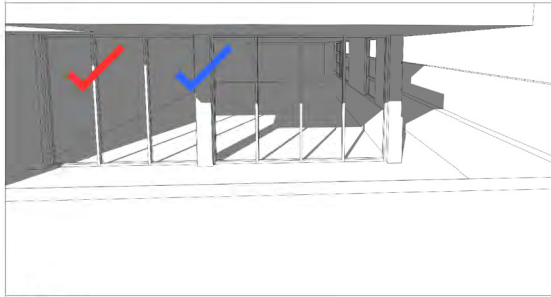
12pm



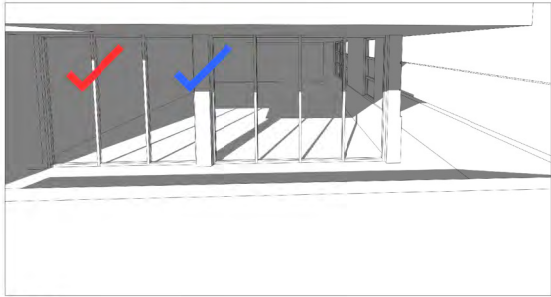
1230pm



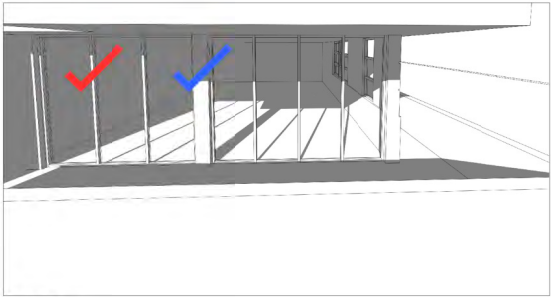
1pm



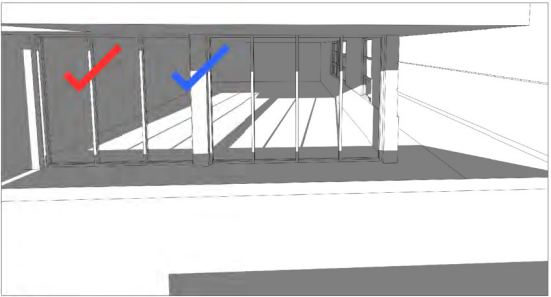
130pm



2pm



230pm



3pm

SOLAR ACCESS - E101
WINTER SOLSTICE



BALCONY 3hrs 30mins



LIVING 3hrs 30mins

NOT FOR CONSTRUCTION

Y	19.03.18	ADDITIONAL INFORMATION FOR APPROVAL	SJ	ADM
X	09.02.18		djm	ADM
ISSUE	DATE	DESCRIPTION	initials	chkd
sign			date	
These drawings are not to be scaled. Figured dimensions shall be used in all cases.				

COPYRIGHT - These drawings remain the exclusive copyright of ADM Architects. Reproductions in any form whether electronic, digital or otherwise shall not be allowed except by express permission granted in writing by ADM Architects.

FIGURED DIMENSIONS - These drawings are not to be scaled. Figured dimensions shall be used in all cases.

DISCREPANCIES IN DIMENSIONS/POSITIONS/LOCATIONS/FINISHES The Contractor is to verify any dimensional, location or finish discrepancy with ADM Architects prior to any physical construction or setting out so that ADM Architects is given the opportunity to resolve potential discrepancies or conflicts in sufficient time without causing abortive work. The Contractor shall be responsible for notifying ADM Architects of any such discrepancy or conflict that may arise on site.

COORDINATION OF WORKS - These drawings are to be read in conjunction with the full set of consultant's drawings, specifications, reports and DA conditions.

NOMINATED ARCHITECT - The nominated Architect for ADM Projects (Australia) Pty Ltd T/A ADM Architects is Angelo Di Martino AIB No.7608



94 Kembla St, Wollongong NSW 2500 PO Box 3561 Wollongong
ph: 02 4228 6400 fax: 02 4228 6955 www.admarchitects.com.au

NICOLAS
DAOUD &
CO PTY. Ltd

Project
DEMOLITION OF EXISTING STRUCTURES AND CONSTRUCTION
OF A MIXED USE DEVELOPMENT COMPRISING RESIDENTIAL
APARTMENTS ABOVE RETAIL SHOPS, COMMERCIAL TENANCIES
AND ASSOCIATED CARPARKING AREAS
at
LOT 1, DP50193, LOT 3, DPI I04857, PT.1, DP506764, LOTS 100 & 200,
DPI017091,
AKUNA & TERRALONG STREET
KIAMA

scale	NTS		
date	MARCH 2018		
drawn	djm	SJ	chkd ADM
drawing	DEVELOPMENT APPLICATION		
SOLAR ACCESS - E101			
Project No.	Drawing No.	issue	
2016-19(a)	A-429b.1	Y	



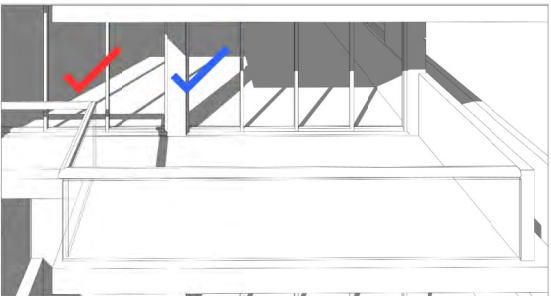
1130am



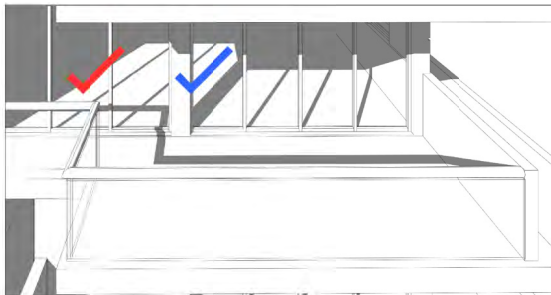
12pm



1230pm



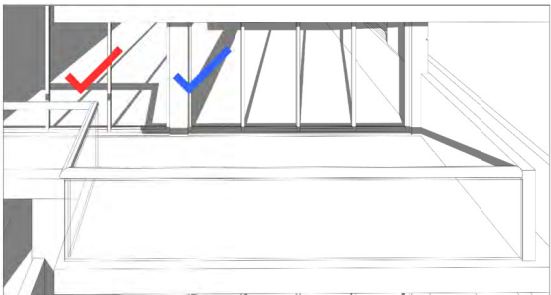
1pm



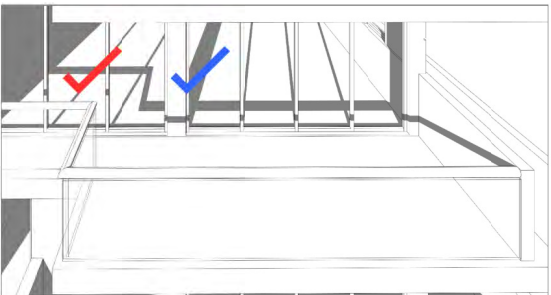
130pm



2pm



230pm



3pm

SOLAR ACCESS - E201
WINTER SOLSTICE

	BALCONY	3hrs 30mins
	LIVING	3hrs 30mins

NOT FOR CONSTRUCTION

Y	19.03.18	ADDITIONAL INFORMATION FOR APPROVAL	SJ	ADM
X	09.02.18		djm	ADM
ISSUE	DATE	DESCRIPTION	initials	chkd
sign			date	
These drawings are not to be scaled. Figured dimensions shall be used in all cases.				


COPYRIGHT - These drawings remain the exclusive copyright of ADM Architects. Reproductions in any form whether electronic, digital or otherwise shall not be allowed except by express permission granted in writing by ADM Architects.

FIGURED DIMENSIONS - These drawings are not to be scaled. Figured dimensions shall be used in all cases.

DISCREPANCIES IN DIMENSIONS/POSITIONS/LOCATIONS/FINISHES The Contractor is to verify any dimensional, location or finish discrepancy with ADM Architects prior to any physical construction or setting out so that ADM Architects is given the opportunity to resolve potential discrepancies or conflicts in sufficient time without causing abortive work. The Contractor shall be responsible for notifying ADM Architects of any such discrepancy or conflict that may arise on site.

COORDINATION OF WORKS - These drawings are to be read in conjunction with the full set of consultant's drawings, specifications, reports and DA conditions.

NOMINATED ARCHITECT - The nominated Architect for ADM Projects (Australia) Pty Ltd T/A ADM Architects is Angelo Di Martino AIB No.7608



94 Kembla St, Wollongong NSW 2500 PO Box 3561 Wollongong
ph: 02 4228 6400 fax: 02 4228 6955 www.admarchitects.com.au

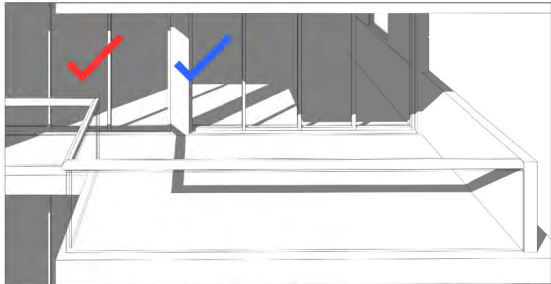
**NICOLAS
DAOUD &
CO PTY. Ltd**

Project
DEMOLITION OF EXISTING STRUCTURES AND CONSTRUCTION
OF A MIXED USE DEVELOPMENT COMPRISING RESIDENTIAL
APARTMENTS ABOVE RETAIL SHOPS, COMMERCIAL TENANCIES
AND ASSOCIATED CARPARKING AREAS
at
LOT 1, DP50193, LOT 3, DP1104857, PT.1, DP506764, LOTS 100 & 200,
DP1017091,
AKUNA & TERRALONG STREET
KIAMA

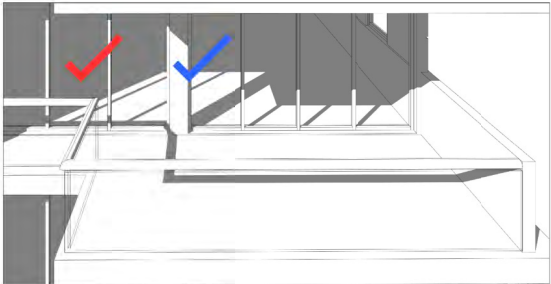
scale	NTS		
date	MARCH 2018		
drawn	djm	SJ	chkd ADM
drawing	DEVELOPMENT APPLICATION		
	SOLAR ACCESS - E201		
Project No.	2016-19(a)	Drawing No.	A-429b.2
issue			Y



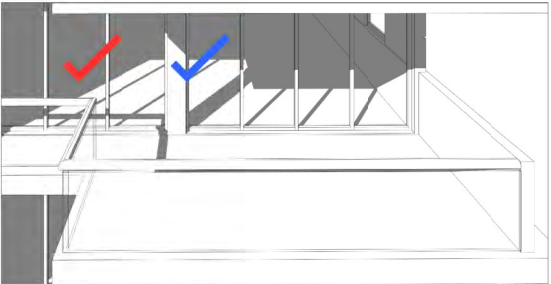
1130am



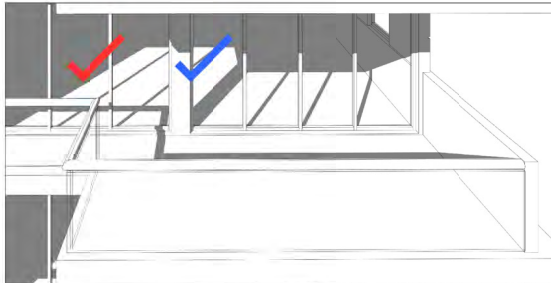
12pm



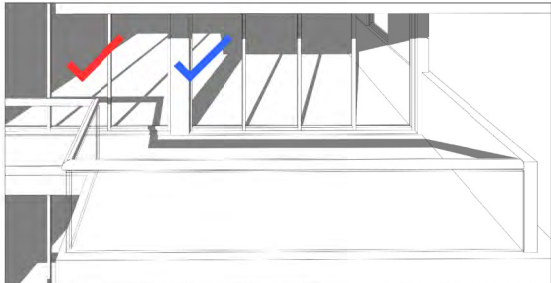
1230pm



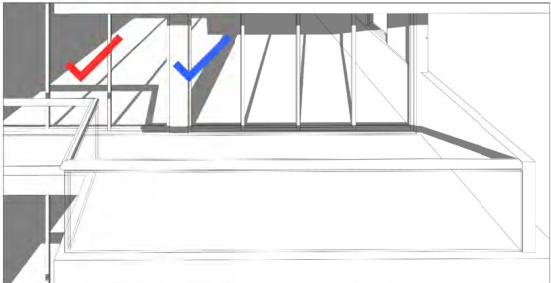
1pm



130pm



2pm



230pm



3pm

SOLAR ACCESS - E301
WINTER SOLSTICE

- 

BALCONY3hrs 30mins
- 

LIVING3hrs 30mins

Y	19.03.18	ADDITIONAL INFORMATION FOR APPROVAL	SJ	ADM
X	09.02.18		djm	ADM
ISSUE	DATE	DESCRIPTION	initials	chkd
sign			date	
These drawings are not to be scaled. Figured dimensions shall be used in all cases.				


COPYRIGHT - These drawings remain the exclusive copyright of ADM Architects. Reproductions in any form whether electronic, digital or otherwise shall not be allowed except by express permission granted in writing by ADM Architects.

FIGURED DIMENSIONS - These drawings are not to be scaled. Figured dimensions shall be used in all cases.

DISCREPANCIES IN DIMENSIONS/POSITIONS/LOCATIONS/FINISHES The Contractor is to verify any dimensional, location or finish discrepancy with ADM Architects prior to any physical construction or setting out so that ADM Architects is given the opportunity to resolve potential discrepancies or conflicts in sufficient time without causing abortive work. The Contractor shall be responsible for notifying ADM Architects of any such discrepancy or conflict that may arise on site.

COORDINATION OF WORKS - These drawings are to be read in conjunction with the full set of consultant's drawings, specifications, reports and DA conditions.

NOMINATED ARCHITECT- The nominated Architect for ADM Projects (Australia) Pty Ltd T/A: ADM Architects is Angelo Di Martino AIB No.7608



94 Kembla St, Wollongong NSW 2500 PO Box 3061 Wollongong
ph: 02 4228 6400 fax: 02 4228 6955 www.admarchitects.com.au

**NICOLAS
DAOUD &
CO PTY. Ltd**

Project
DEMOLITION OF EXISTING STRUCTURES AND CONSTRUCTION
OF A MIXED USE DEVELOPMENT COMPRISING RESIDENTIAL
APARTMENTS ABOVE RETAIL SHOPS, COMMERCIAL TENANCIES
AND ASSOCIATED CARPARKING AREAS
at
LOT 1, DP50193, LOT 3, DP1104857, PT.1, DP506764, LOTS 100 & 200,
DP1017091,
AKUNA & TERRALONG STREET
KIAMA

scale	NTS		
date	MARCH 2018		
drawn	djm	SJ	chkd ADM
drawing	DEVELOPMENT APPLICATION		
	SOLAR ACCESS - E301		
Project No.	2016-19(a)	Drawing No.	A-429b.3
issue			Y

NOT FOR CONSTRUCTION



COLOUR AND MATERIALS SCHEDULE
RESIDENTIAL (SHOALHAVEN STREET ASPECT)

1	DULUX LEXICON CONCRETE SLAB EDGES AND UPTURNS
2	DULUX MILTON MOON GENERAL WALLING
3	COLORBOND IRONSTONE GARAGE DOORS, PODIUM AND FEATURE WALLS
4	BLUESTONE CLADDING CLADDED BASE FEATURE WALLING
5	CLEAR GLASS ALL GLAZING AND GLASS BALUSTRADING
6	POWDERCOAT SILVER PEARL WINDOW FRAMES, ALUMINIUM ELEMENTS, AND LOUVRES

NOT FOR CONSTRUCTION

X	09.02.18	FOR APPROVAL	djm	ADM
ISSUE	DATE	DESCRIPTION	initials	chkd
sign			date	
These drawings are not to be scaled. Figured dimensions shall be used in all cases.				

COPYRIGHT - These drawings remain the exclusive copyright of ADM Architects. Reproductions in any form whether electronic, digital or otherwise shall not be allowed except by express permission granted in writing by ADM Architects.

FIGURED DIMENSIONS - These drawings are not to be scaled. Figured dimensions shall be used in all cases.

DISCREPANCIES IN DIMENSIONS/POSITIONS/LOCATIONS/FINISHES The Contractor is to verify any dimensional, location or finish discrepancy with ADM Architects prior to any physical construction or setting out so that ADM Architects is given the opportunity to resolve potential discrepancies or conflicts in sufficient time without causing abortive work. The Contractor shall be responsible for notifying ADM Architects of any such discrepancy or conflict that may arise on site.

COORDINATION OF WORKS - These drawings are to be read in conjunction with the full set of consultant's drawings, specifications, reports and DA conditions.

NOMINATED ARCHITECT - The nominated Architect for ADM Projects (Australia) Pty Ltd T/A: ADM Architects is Angelo Di Martino AIB No.7608



NICOLAS
DAOUD &
CO PTY. Ltd

Project
DEMOLITION OF EXISTING STRUCTURES AND CONSTRUCTION
OF A MIXED USE DEVELOPMENT COMPRISING RESIDENTIAL
APARTMENTS ABOVE RETAIL SHOPS, COMMERCIAL TENANCIES
AND ASSOCIATED CARPARKING AREAS

at
LOT 1, DP50193, LOT 3, DP1104857, PT.1, DP506764, LOTS 100 & 200,
DP1017091,
AKUNA & TERRALONG STREET
KIAMA

scale	NTS		
date	FEBRUARY 2018		
drawn	DQ	chkd	ADM
drawing	DEVELOPMENT APPLICATION		
MATERIALS & COLOURS SCHEDULE 1 of 2			
Project No.	Drawing No.	issue	
2016-19(a)	A501	X	